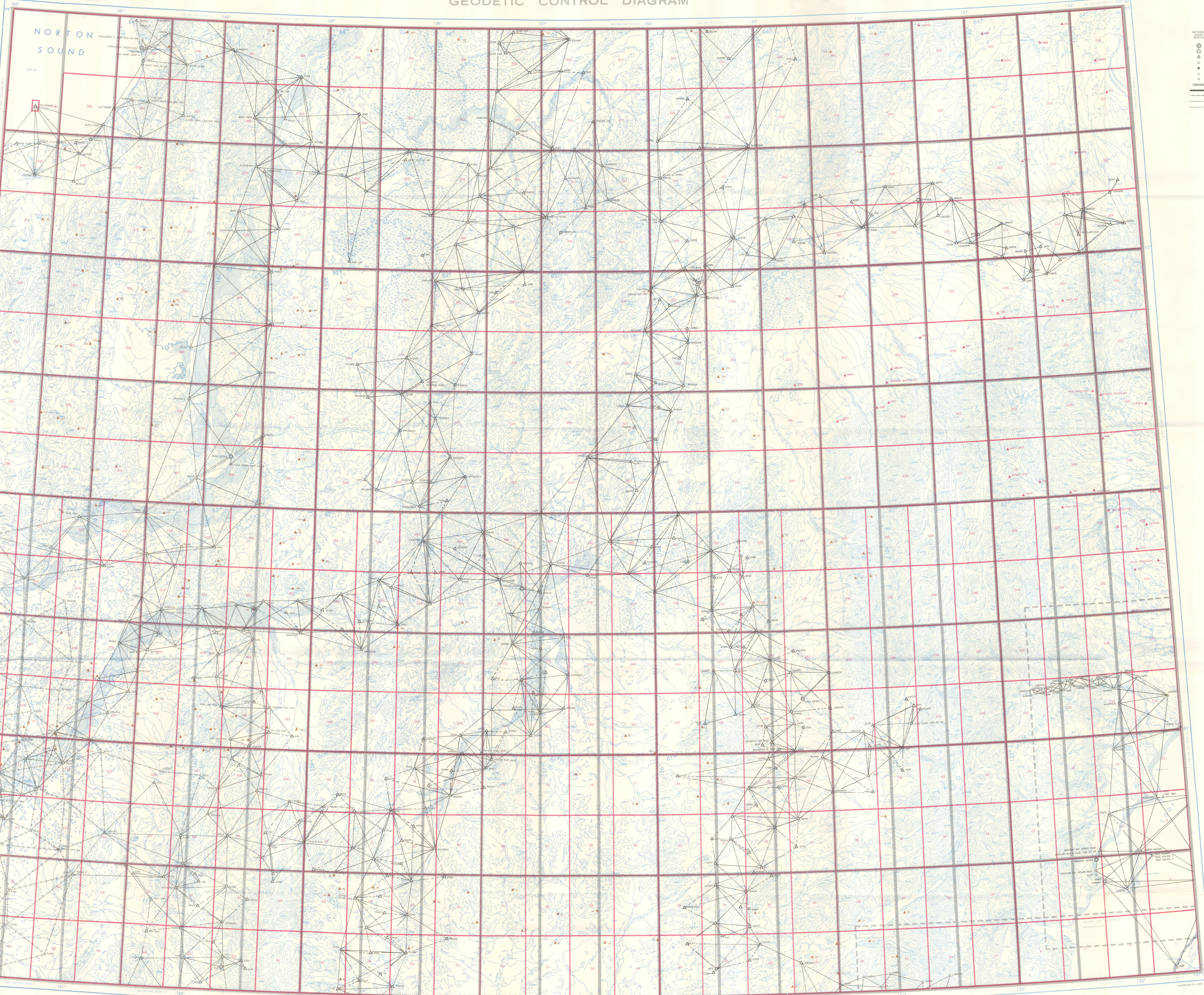


GEODETIC CONTROL DIAGRAM



HORIZONTAL CONTROL

NATIONAL GEODETIC SURVEY
 - Triangulation Station
 - Spirit Level Station
 - Satellite Station
 - Other Station

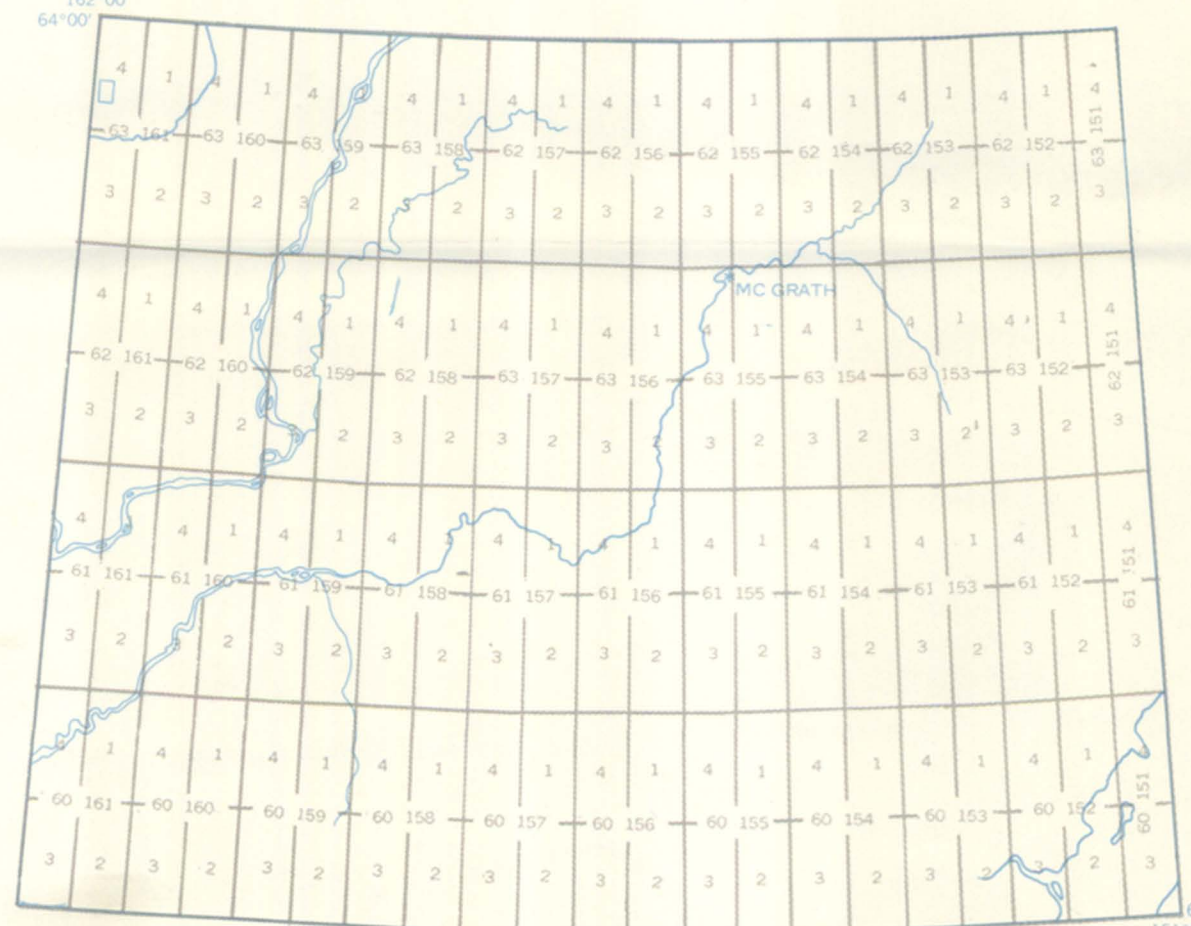
VERTICAL CONTROL

NATIONAL GEODETIC SURVEY
 - Leveling Station
 - Tide Station
 - Other Station

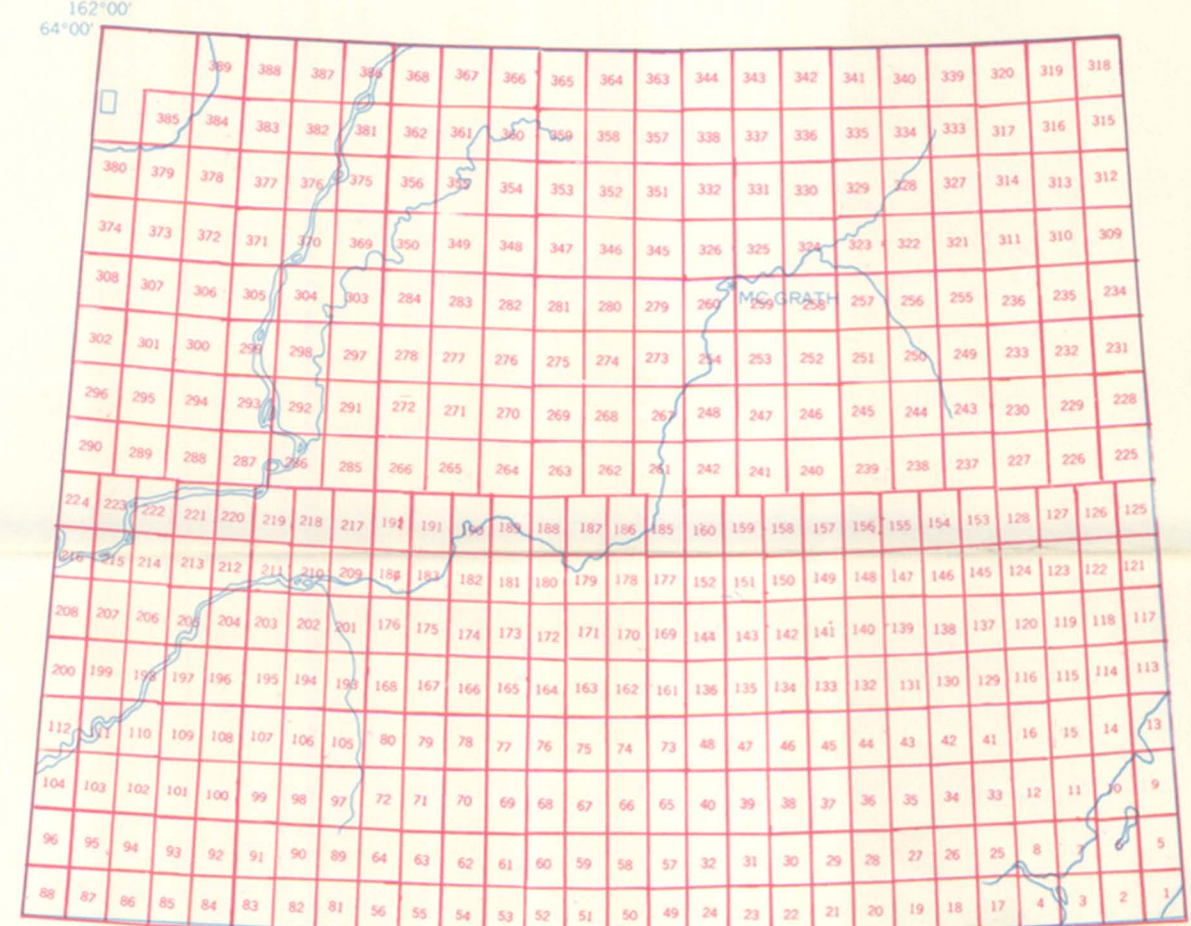
STATE SURVEY CONTROL

State Survey Station
 State Survey Line

NATIONAL OCEAN SERVICE
THIRTY MINUTE QUADRANGLE DESIGNATION



GEOLOGICAL SURVEY
QUADRANGLE DESIGNATION

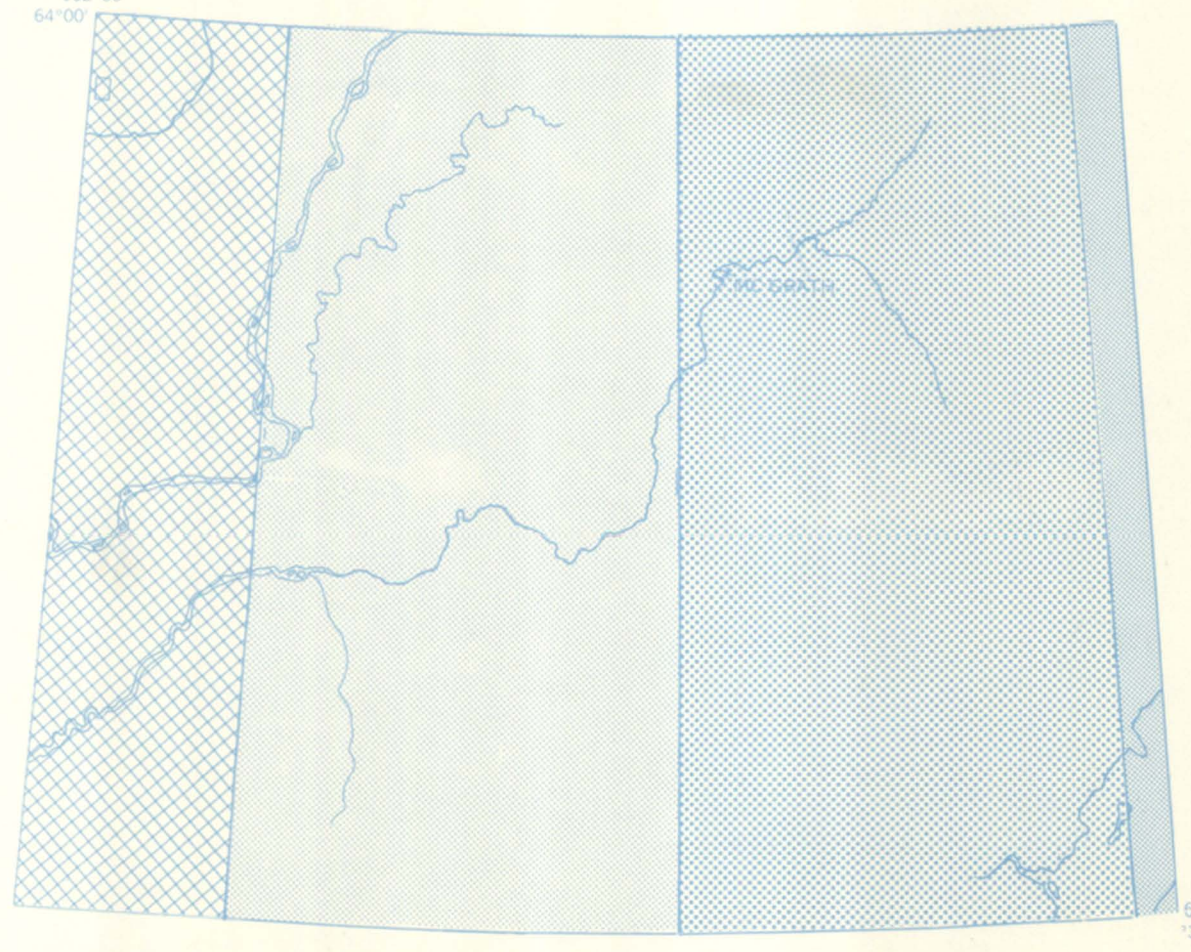


OTHER CONTROL DATA SHOWN IN RED BY 30-MINUTE QUADRANGLE ONLY FROM NATIONAL OCEAN SERVICE, NOAA
 NATIONAL MAPS AND CHARTS

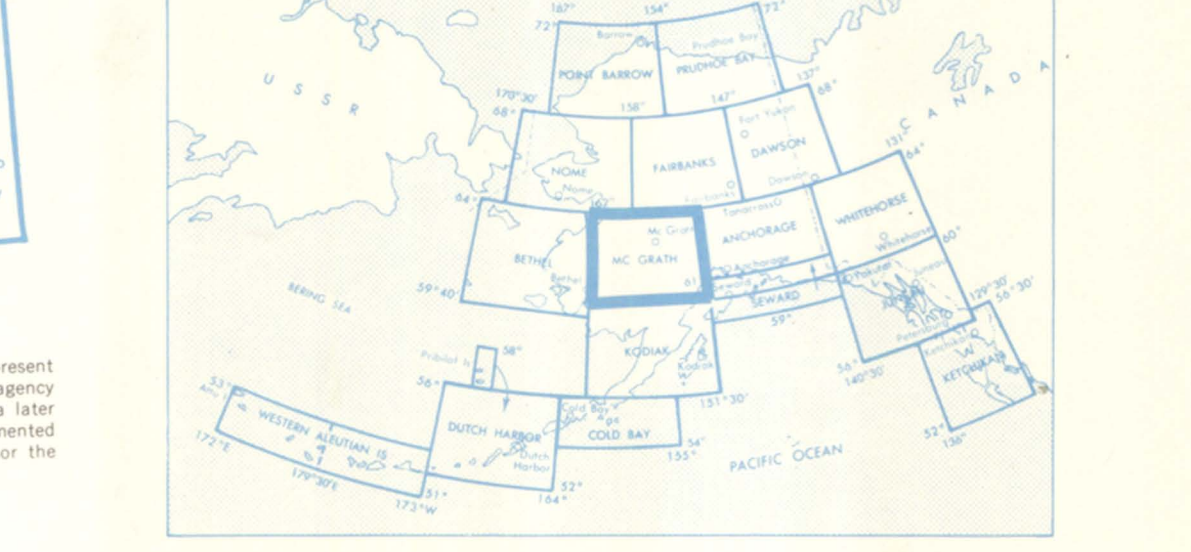
STATION NO.	STATION NAME	COORDINATES	HEIGHT	DATE	AGENCY
101
102
103
104
105
106
107
108
109
110
111
112
113
114
115
116
117
118
119
120

OTHER AGENCIES

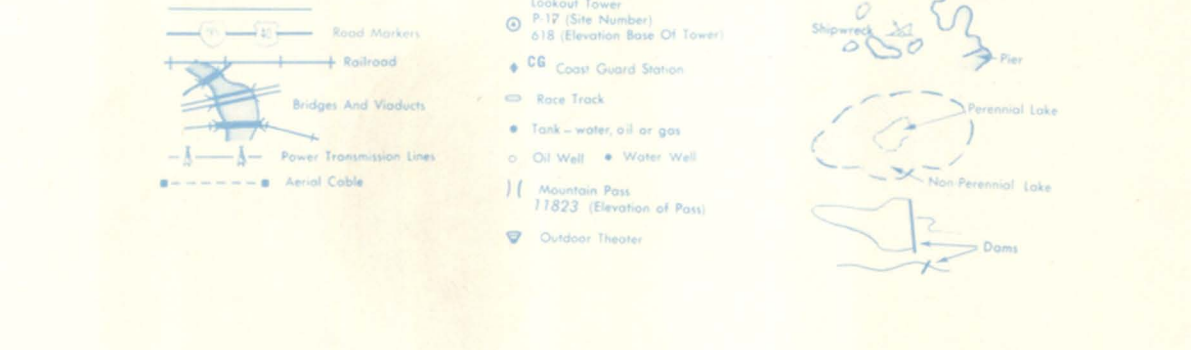
U.S. BUREAU OF LAND MANAGEMENT
 REGIONAL GEOLOGIC CONTROL DATA
 REGIONAL GEODETIC CONTROL DATA
 REGIONAL OCEANOGRAPHIC DATA
 REGIONAL OCEANOGRAPHIC DATA
 REGIONAL OCEANOGRAPHIC DATA



LOCATION DIAGRAM FOR MC GRATH



TOPOGRAPHIC LEGEND



KEY TO NUMBERED STATIONS

FOR
MC GRATH, ALASKA GEODETIC CONTROL DIAGRAM
BY THE
NATIONAL GEODETIC SURVEY

DATE 04/28/84

NATIONAL OCEAN SERVICE

THESE NUMBERS ARE IN BLACK ON THE DIAGRAM

- 1 FLOOD WEST BASE
- 2 FLOOD EAST BASE
- 3 TILL
- 4 TEAT
- 5 AP (1971) STA B ANI
- 6 AP (1971) STA A ANI
ARP (1971) ANI
ANI AK NE BASE
- 7 BETHEL 2
- 8 BM 6.27 (1949)
BETHEL N STRIP (1949) RM 2
BETHEL N STRIP (1949)
STATION 13
STATION 20 PLUS 40 23 PLUS 60
STATION 30 PLUS 25
- 9 BETHEL MAGNETIC (1949)
- 10 BETHEL WEST BASE (1949)
- 11 NIGHEAD (1949) AZ MK
- 12 UNALAKLEET NORTH BASE
- 13 UNALAKLEET MAGNETIC STATION
OLIVER
- 14 S 2646 CID S 1962 GLO (1951)
- 15 MC GRATH BASE C
- 16 MC GRATH BASE A
MC GRATH BASE B
MC GRATH NW BASE
- 17 MC GRATH BASE D
MC GRATH SE BASE (1951)
- 18 BETHEL SOUTH STRIP (1949)

OTHER AGENCIES

THESE NUMBERS ARE IN BROWN ON THE DIAGRAM

- 19 CUR (USE)
- 20 BAY (USE)
- 21 CHUL (USE)
- 22 FOKNEDE (USE)
- 23 LACH (USE)
- 24 KIJIK (USE)
- 25 KIN (USE)
- 26 TAN (USE)
- 27 T42 (USE)
- 28 TWIN (USE)
- 29 CENTER (USE)
- 30 HALF (USE)
- 31 MOUNT (USE)
- 32 OLI (USE)
- 33 TUNDRA (USE)
- 34 ATNA (USE)
- 35 CAMP (USE)
- 36 FLAT (USE)
- 37 HEAD (USE)
- 38 HILL (USE)

- 39 HOLI (USE)
- 40 PALIK (USE)
- 41 BOOT (USE)
- 42 BUTCH (USE)
- 43 HUMP (USE)
- 44 SAL (USE)
- 45 VUK (USE)
- 46 BAG (USE)
- 47 EKUK (USE)
- 48 PAPER (USE)
- 49 SABRA (USE)
- 50 TENT (USE)
- 51 RIDGE (USE)
- 52 BUCK (USE)
- 53 NYAC (USE)
- 54 PENTECOST (USE)
- 55 TOP (USE)
- 56 TULA (USE)
- 57 ALBE (USE)
- 58 ALBE AZ MK (USE)
BETH B 1956 (USE)
- 59 BERRY (USE)
- 60 CLIFF (USE)
- 61 DELLA (USE)
- 62 HANNA (USE)
- 63 JOHNSONE (USE)
- 64 KNOLL (USE)
- 65 KUSK (USE)
- 66 LOU (USE)
- 67 PRUITT (USE)
- 68 THIRD (USE)
- 69 BEAR (USE)
- 70 CRASH (USE)
- 71 PEAK C-3 (USE)
- 72 PEAK 2600 (USE)
- 73 PEAK 7300 (USE)
- 74 PEAK 9150 (USE)
- 75 PEAK 9660 (USE)
- 76 UTICA (USE)
- 77 WOLF (USE)
- 78 ALSP (USE)
- 79 BUSKE (USE)
- 80 GAG (USE)
- 81 LIME (USE)
- 82 POINT (USE)
- 83 TIT (USE)
- 84 HENDERSON MT (USE)
- 85 HIGH (USE)
- 86 ACHA (USE)
- 87 BUCKSTOCK (USE)
- 88 EAST BASE (USE)
- 89 KALU (USE)
- 90 ALAN (USE)
- 91 AL (USE)
- 92 AROD (USE)
- 93 BERN (USE)
- 94 BIGUN (USE)
- 95 BONANZA (USE)
- 96 COBALT (USE)
- 97 DISC (USE)

- 98 DIVIDE (USE)
- 99 DOME (USE)
- 100 IDIT (USE)
- 101 LUKE (USE)
- 102 PEARL (USE)
- 103 RUSSIAN MT (USE)
- 104 SAW (USE)
- 105 SWIFT (USE)
- 106 TIMBER ALT BASE (USE)
- 107 WEST BASE (USE)
- 108 ASP (USE)
- 109 DOG (USE)
- 110 EDGE (USE)
- 111 GRANITE (USE)
- 112 KEN (USE)
- 113 MIUT (USE)
- 114 NECK (USE)
- 115 NIK (USE)
- 116 NOLD (USE)
- 117 OPHIR (USE)
- 118 PHIL (USE)
- 119 PORTAGE MT (USE)
- 120 TOP (USE)
- 121 DOT (USE)
- 122 FITZEN (USE)
- 123 GIN (USE)
- 124 HOLT (USE)
- 125 LAKE (USE)
- 126 MESA (USE)
- 127 MIKE (USE)
- 128 MUSKEG (USE)
- 129 PHILLIPS (USE)
- 130 SECOND (USE)
- 131 SIGHT (USE)
- 132 VERTA (USE)
- 133 KAKO (USE)
- 134 ATNA (USE)
- 135 LUCK (USE)
- 136 SELA (USE)
- 137 SUK (USE)
- 138 ALTAT (USE)
TAT B (USE)
- 140 LIN (USE)
- 141 GIL (USE)
- 142 FOX (USE)
- 143 HAL (USE)
- 144 INNO (USE)
- 145 KET (USE)
- 146 KO (USE)
- 147 LUK (USE)
- 148 PIPE (USE)
- 149 SHANGE (USE)
- 150 ABLE (USE)
- 151 AHOK (USE)
- 152 BONASILA DOME (USE)
- 153 DAME (USE)
- 154 FISH (USE)
- 155 HARP (USE)
- 156 PAGE (USE)

- 157 POLE (USE)
- 158 RET (USE)
- 159 STUY (USE)
- 160 BLOW (USE)
- 161 BROCK (USE)
- 162 GREEN (USE)
- 163 JACK (USE)
- 164 MONA (USE)
- 165 NANCE (USE)
- 166 NOB (USE)
- 167 RAIN (USE)
- 168 WALK (USE)
- 169 AFSKY (USE)
- 170 ANDRE (USE)
- 171 KICKMOND (USE)
- 172 TOIK (USE)
- 173 ALUN (USE)
- 174 BALDY (USE)
- 175 DOME HILL (USE)
- 176 HEAD (USE)
- 177 HUMPY (USE)
- 178 JINX (USE)
- 179 KNOLL (USE)
- 180 LOMA (USE)
- 181 ROCK (USE)
- 182 CHA (USE)
- 183 POINT (USE)
- 184 RIDGE (USE)
- 185 SADDLE (USE)
- 186 BIRCH (USE)
- 187 31-60-081B (USE)
- 188 KLATNA (USE)
- 189 SPRUCE (USE)
- 190 ROCKY HILL (USE)
- 191 TIMBER (USE)
- 192 OUR CREEK (USE)
- 193 OUTCROP (USE)
- 194 RIDGE (USE)
- 195 TELSITNA (USE)